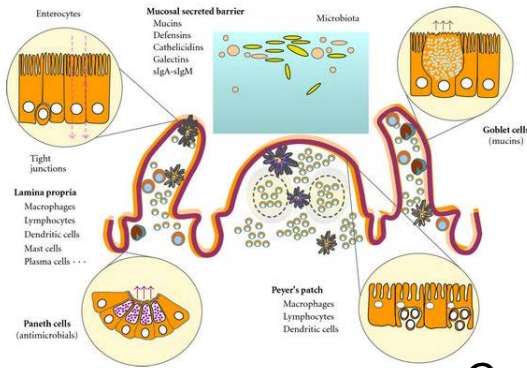


Looking for a way to meet scientists performing exciting biomedical research?



MMI 291 SEMINAR SERIES

Emerging Challenges in Microbiology and Immunology

Current Theme: Interdisciplinary Research



“Discovery of Novel Symbiosis and Plant Interaction Determinants
from the Genomes of 163 Root Nodule Bacteria”

By

Rekha Seshadri, Ph.D.

Bioinformatics Systems Analyst, DoE Joint Genome Institute

Friday, February 12, 2016

12:10 – 1:00 PM

**Genome and Biomedical Sciences Facility
Auditorium – GBSF 1005**

Questions? Call Dr. Jose Torres 752-3157

jvtorres@ucdavis.edu